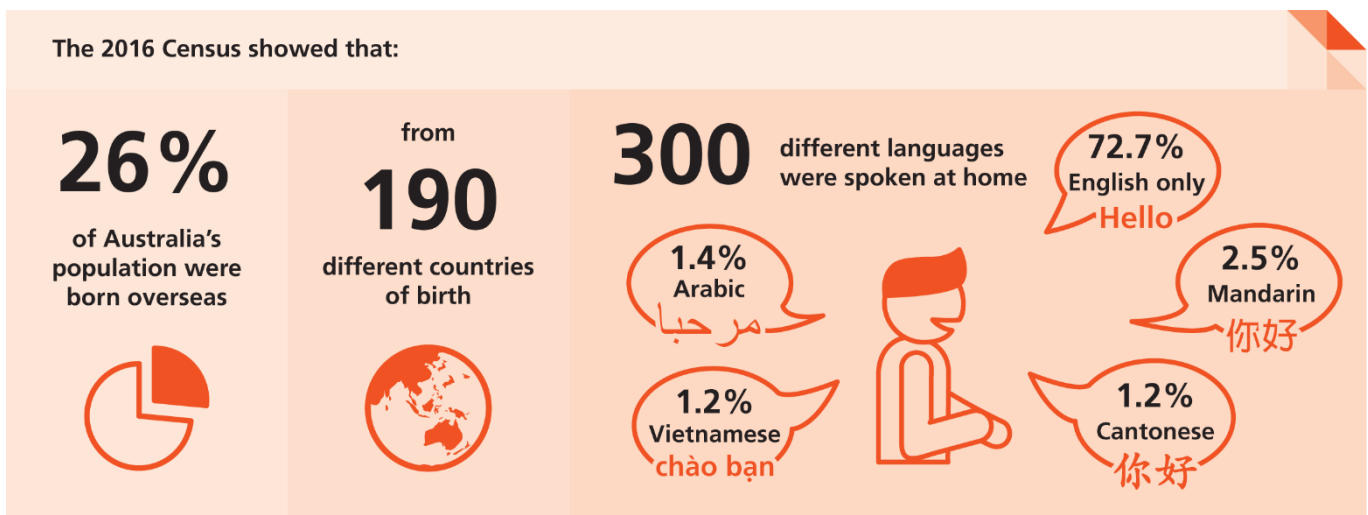


## How to help people from culturally and linguistically diverse backgrounds participate in the 2021 Census

Australia has a culturally and linguistically diverse (CALD) population.

For the 2021 Census, the Australian Bureau of Statistics (ABS) is supporting people from CALD backgrounds who need help. We're working with CALD service providers and community organisations to provide face to face support, including fill in the form sessions. We also have in-language resources available.

This fact sheet will help you answer questions that people from CALD backgrounds might ask about the 2021 Census.



### Questions people from CALD backgrounds might ask

#### What is the Census?

The Census of Population and Housing is a count of every person and home in Australia. The Census will collect information about every person (even international visitors and babies) in Australia on Census night, **Tuesday 10 August 2021**. It asks questions about things like your age, country of birth, religion, ancestry, language used at home, work and education. The Census happens every five years.

#### How does the Census benefit me and my community?

The Census is used for lots of things, like planning for transport, schools, roads, housing and healthcare services. The Census helps inform local organisations to set up social and sporting activities and education classes, and local libraries can provide in-language books for newly arrived migrants.

#### How do I complete the usual address question on the form?

If you're in Australia to study, work or live for at least a year, enter your current address in Australia as your usual address. It doesn't matter if you have gone home for holidays during this time.

If you're visiting from overseas for less than a year, select 'Other country'.

## Do I have to do the Census?

Yes. the Census is compulsory\*. This means everyone in Australia except diplomats and their families must complete the Census wherever they are on Census night. This includes visa holders, tourists and international visitors like students studying at Australian universities. You should complete the Census wherever you are staying on Census night.

\*See the 2021 Census Privacy Statement at [www.census.abs.gov.au/privacy](http://www.census.abs.gov.au/privacy).

## I have family visiting from overseas and staying with me. Do I include them on my Census form?

Yes. Visitors are counted, no matter how long they have been in Australia or how long they plan to stay.

## Is the Census form available in languages other than English?

No. The Census form is in English. If you need help, ask family or friends to help with your Census, or you could go to a fill in the form session. Search [www.census.abs.gov.au/find-us](http://www.census.abs.gov.au/find-us) to find sessions near you. If you have questions about the Census, you can also call the Translating and Interpreting Service (TIS National) on **131 450**.

## Can I complete the Census on paper instead of online?

Yes. From early August, you can get a paper form by calling the 24-hour automated paper form request service on **1800 130 250**. You'll need your 16-digit Census number from your Census letter if you have one. Paper forms will also be available at selected locations [www.census.abs.gov.au/find-us](http://www.census.abs.gov.au/find-us).

## What happens to the personal information I provide on the Census form?

Your personal information isn't shared with anyone. This includes other government agencies. The personal information you provide in the Census is protected by law. You can't be identified by the information you share about yourself or your family in your Census.

## I want to promote the Census in my school, how can I do that?

Lesson guides and worksheets are available to download at [www.census.abs.gov.au/supporters](http://www.census.abs.gov.au/supporters). Activities are available for levels 1, 2 and 3. The themes covered are:

- What is the Census?
- How the Census helps people
- How do I fill in the Census form?

## Help and resources



Language resources are available at: [www.census.abs.gov.au/help/languages](http://www.census.abs.gov.au/help/languages)



Lesson guides and worksheets: [www.census.abs.gov.au/supporters](http://www.census.abs.gov.au/supporters)

Find a fill in the form session near you: [www.census.abs.gov.au/find-us](http://www.census.abs.gov.au/find-us)



For help in your language, call the Translating and Interpreting Service (TIS National) on **131 450**